

SECTION 4
PARTIAL LEG SUPPORTED DOUBLE TEE
ON SHELL BEAM

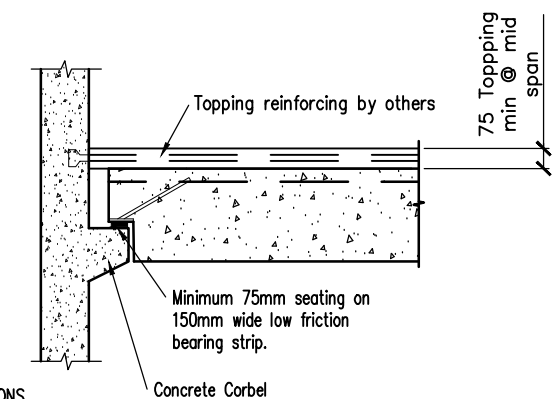
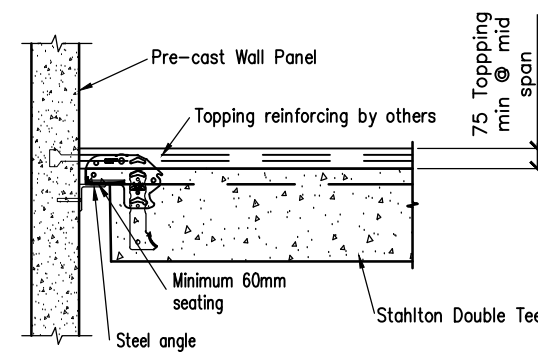
SECTION 5
DOUBLE TEE SEATING ON BLOCK WALL

Double Tee Notes

- 1: Concrete and Topping
 - (A) Double Tee concrete strength at 28 days = 50MPa, release strength to be 28MPa minimum.
 - (B) Topping concrete is to be a minimum of 25MPa at 28 days, or as specified by the engineer and a minimum of 75mm thick. Refer to engineers drawings for specified topping profile.
 - (C) Topping reinforcing as per engineers' drawings.
- 2: Seating
 - (A) It is recommended units shall be seated on McDowell bearing strip.
 - (B) End Seating: Greater of 85mm or span/180 + 15mm typical on concrete, 75mm typical on steel if under 75mm or span/180 on concrete or less 15mm on steel please consult Stahlton.

Tolerances	
(A) Length	
Units 0 TO 6 metres long	+/- 8mm
Units 6 to 12 metres long	+/-15mm
Units over 12 metres long	+/-20mm
(B) Width	
Standard Double Tee units	+/- 5mm
(C) Height and other sectional dimensions	+/- 5mm
Refer to NZS 3109:1997 for the above tolerances.	
- 3: Handling
 - (A) Units shall be stacked for storage or transport on timber dunnage positioned as per Stahlton handling detail.
 - (B) Units are to be lifted only at lifting eyes.

- 4: Temporary Propping
 - (A) Temporary propping is shown on the layout plan thus (required pre camber in millimetres). Props (?mm)
Props should be in place before landing of units.
 - (B) The contractor is to design a suitable temporary propping system capable of supporting the precast units plus all construction loads.
 - (C) Props are to remain in place until topping concrete has reached 14MPa
- 5: Dimensions
The contractor is to check and confirm dimensions of all precast units and sign approval for manufacture.
- 6: Design
 - (A) For further sectional and reinforcing details see engineers drawings.
 - (B) Design loads as shown on drawings.
- 7: Fire Ratings
FRR equals 1.0 hours
- 8: Weatherproofing
The contractor shall ensure that all weatherproofing details, including chases, drip grooves, steps, falls, water stops, watertight membranes, etc. are adequate for their purpose.
- 9: Surface Finish
Top: Light Broom Finish
Bottom (Mold Face): F4
- 10: Penetrations
Floor penetrations for drainage fittings, service ducts, pipes, conduits etc shall be positioned to miss prestressed strands. Contact Stahlton for guidance if in doubt.



WALL PANEL OPTIONS



www.stahlton.co.nz

Drawn by : PvdM

Rev : A

Date : 19-04-2016

Dwg:

DOUBLE TEE STANDARD DETAILS

Check by : JM

Scale : 1:40

Dwg no : DT Standards