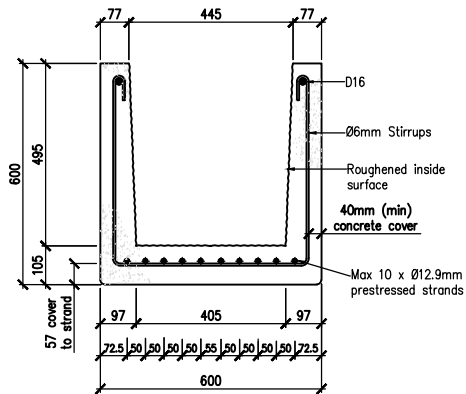


600 Shell Beam Cross Section

Section Properties :

I	-	1506 x 10 ⁶ mm ⁴
y	-	140.2mm
Zb	-	10.7 x 10 ⁶ mm ³
Zt	-	5.8 x 10 ⁶ mm ³
Area	-	116,705mm sq

Unit weight (for handling) : 308 kg/lin m
Concrete Strength : 45 MPa



600 Shell Beam Cross Section

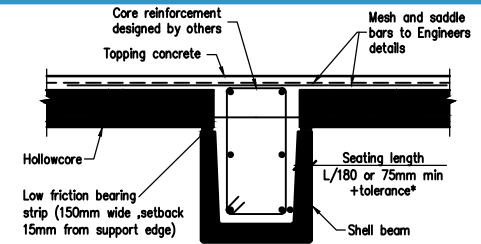
Section Properties :

I	-	4909 x 10 ⁶ mm ⁴
y	-	221mm
Zb	-	22.2 x 10 ⁶ mm ³
Zt	-	13 x 10 ⁶ mm ³
Area	-	149,219mm sq

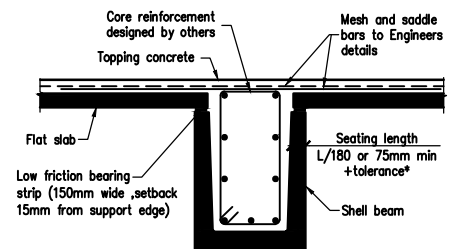
Unit weight (for handling) : 393 kg/lin m
Concrete Strength : 45 MPa

Strand Properties for Ø12.7mm or Ø12.9mm:

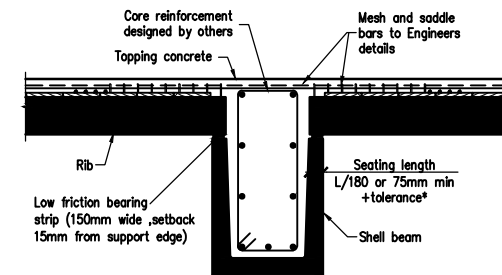
Nominal area: 100mm²
Characteristic breaking load: 184kN



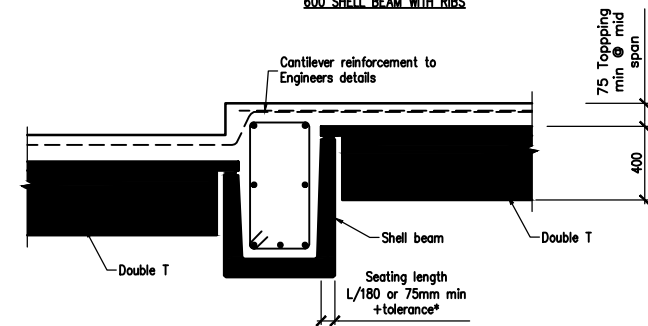
600 SHELL BEAM WITH HOLLOWCORE



600 SHELL BEAM WITH FLAT SLAB



600 SHELL BEAM WITH RIBS



STEPPED SHELL BEAM OPTION WITH DOUBLE T



www.stahlton.co.nz

Drawn by : PvdM	Rev : A	Date : 18-02-2016	Dwg: 600mm SHELL BEAMS
Check by : JM	Scale : 1:40	Dwg no : 600 SHELL BEAM	