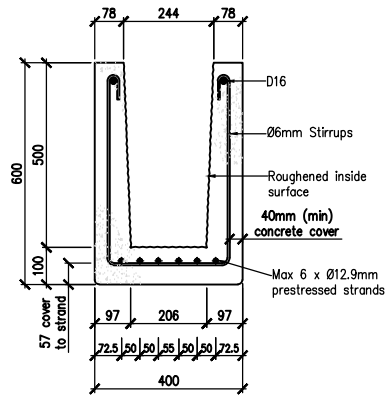


400 Shell Beam Cross Section

Section Properties :

I	-	1321 x 10 ⁶ mm ⁴
y	-	163mm
Zb	-	8.12 x 10 ⁶ mm ³
Zt	-	5.57 x 10 ⁶ mm ³
Area	-	94,674mm sq

Unit weight (for handling) : 250 kg/lin m
Concrete Strength : 45 MPa



400 Shell Beam Cross Section

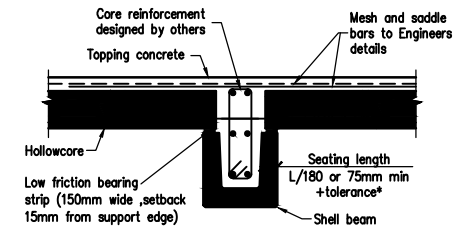
Section Properties :

I	-	4189 x 10 ⁶ mm ⁴
y	-	248.4mm
Zb	-	16.9 x 10 ⁶ mm ³
Zt	-	11.9 x 10 ⁶ mm ³
Area	-	127,316mm sq

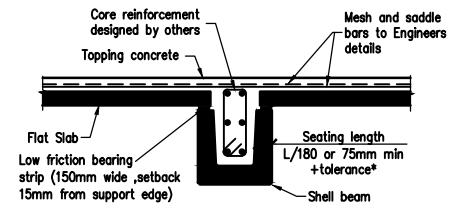
Unit weight (for handling) : 336 kg/lin m
Concrete Strength : 45 MPa

Strand Properties for Ø12.7mm or Ø12.9mm:

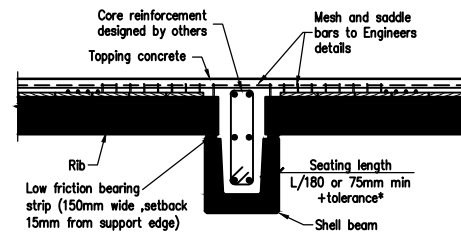
Nominal area: 100mm²
Characteristic breaking load: 184kN



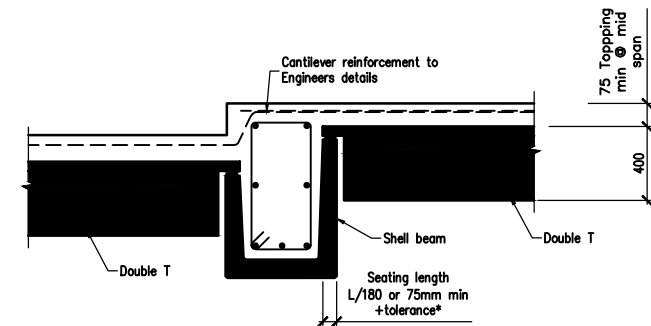
400 SHELL BEAM WITH HOLLOWCORE



400 SHELL BEAM WITH FLAT SLAB



400 SHELL BEAM WITH RIBS



STEPPED SHELL BEAM OPTION WITH DOUBLE T

Drawn by : PvdM	Rev : A	Date : 18-02-2016	Dwg: 400mm SHELL BEAMS
Check by : JM	Scale : 1:40	Dwg no : 400 SHELL BEAM	