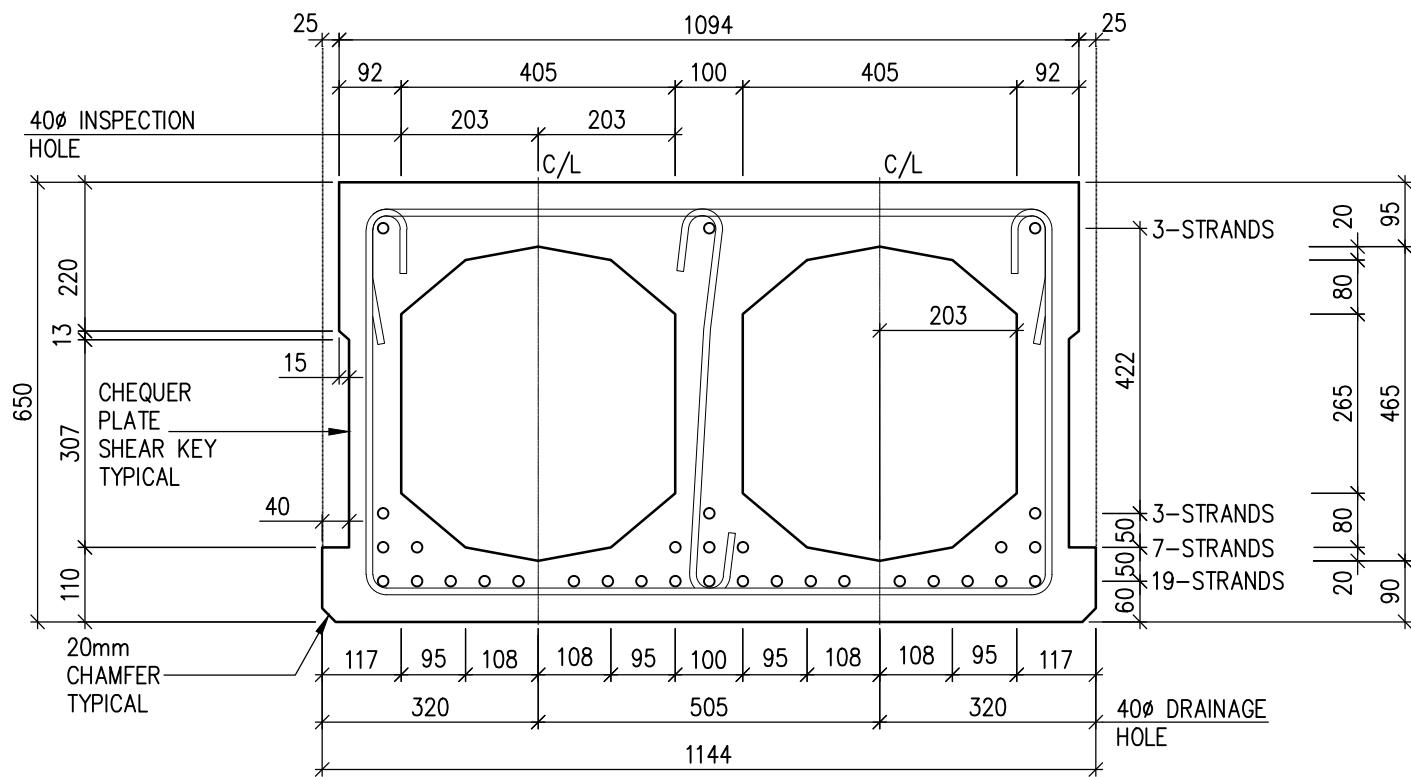


1 2 3 4

A

A



B

B

C

C

**650 DOUBLE HOLLOWCORE  
TYPICAL BRIDGE BEAM SECTION FOR CHRISTCHURCH**

**SCALE 1:10**



D

D

**Section Properties :**

Area -  $0.380 \times 10^6 \text{ mm}^2$   
 $I_x$  -  $16.03 \times 10^9 \text{ mm}^4$   
 $Y_b$  - 290mm  
 $Z_t$  -  $54.35 \times 10^6 \text{ mm}^3$   
 $Z_b$  -  $55.28 \times 10^6 \text{ mm}^3$   
 mass - 0.968 t/m

**Prestressed Notes:**

1. 12.9Ø or 15.2Ø 7 wire "Stress Relieved" super grade low relaxation strand meeting the requirements of ASTM A421 & A416.
2. Minimum breaking load to be 184kN or 250kN respectively.
3. Minimum compressive strength at transfer of prestress shall be 30 MPa
4. During storage, transportation and handling girders shall be kept in an upright position and supported at not more than 500mm from ends
5. For additional information refer to NZTA Standard precast concrete bridge beams Drawings S3.01 to S3.05

F

F



Drawn by:  
B. Holbrook

Checked by:  
J. Marshall

Scale:  
1:10

Dwg:

**650 Double Hollowcore**

Dwg no:

**DH650 Chch**

Rev:

**A**

Sheet:

**8**

1

4